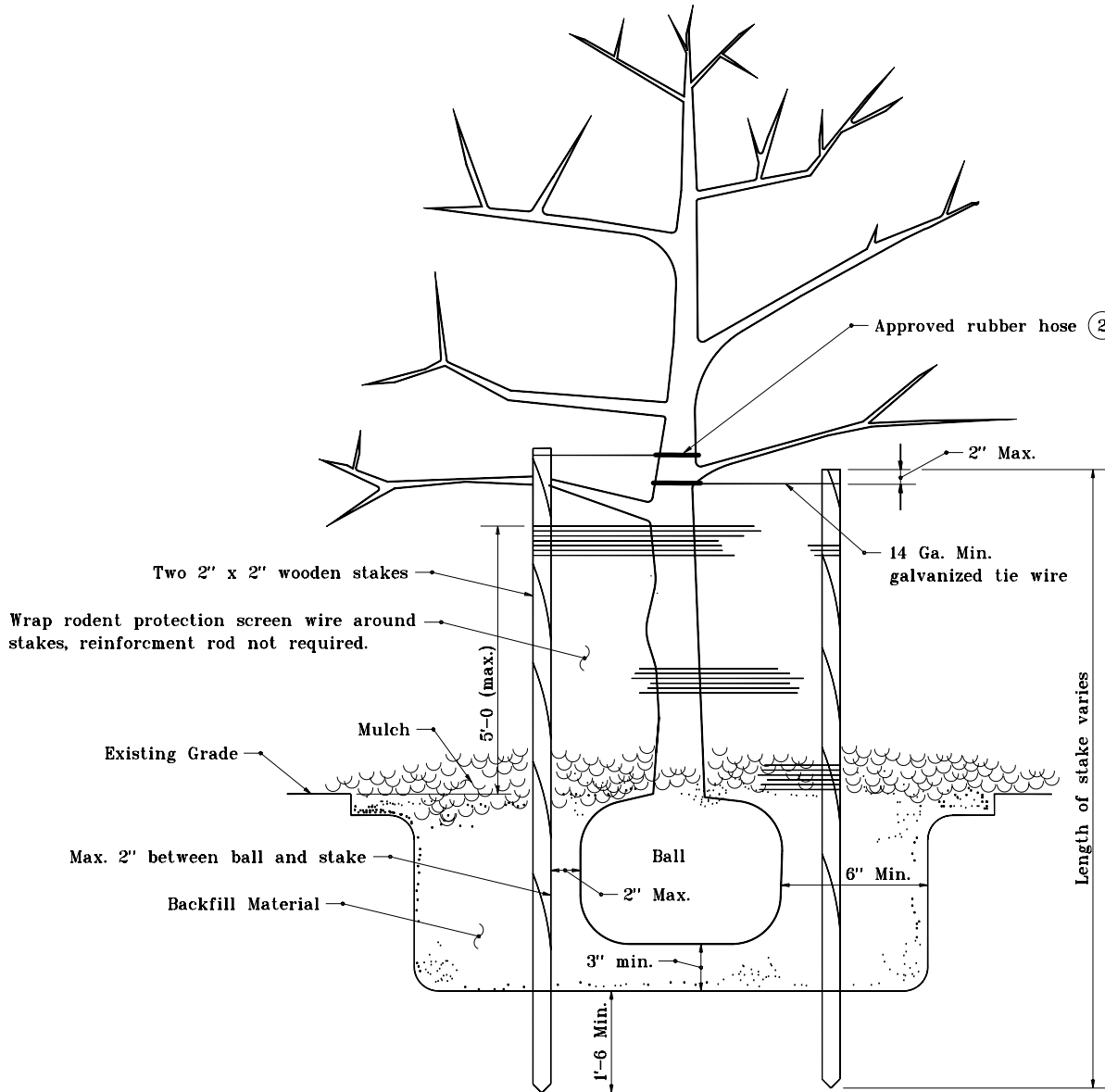


GENERAL NOTES

1. Tie wire securement points on tree shall be above the first or second main branch.
2. See Standard Drawing E 622-LSPL-04 for Rubber Hose Detail.

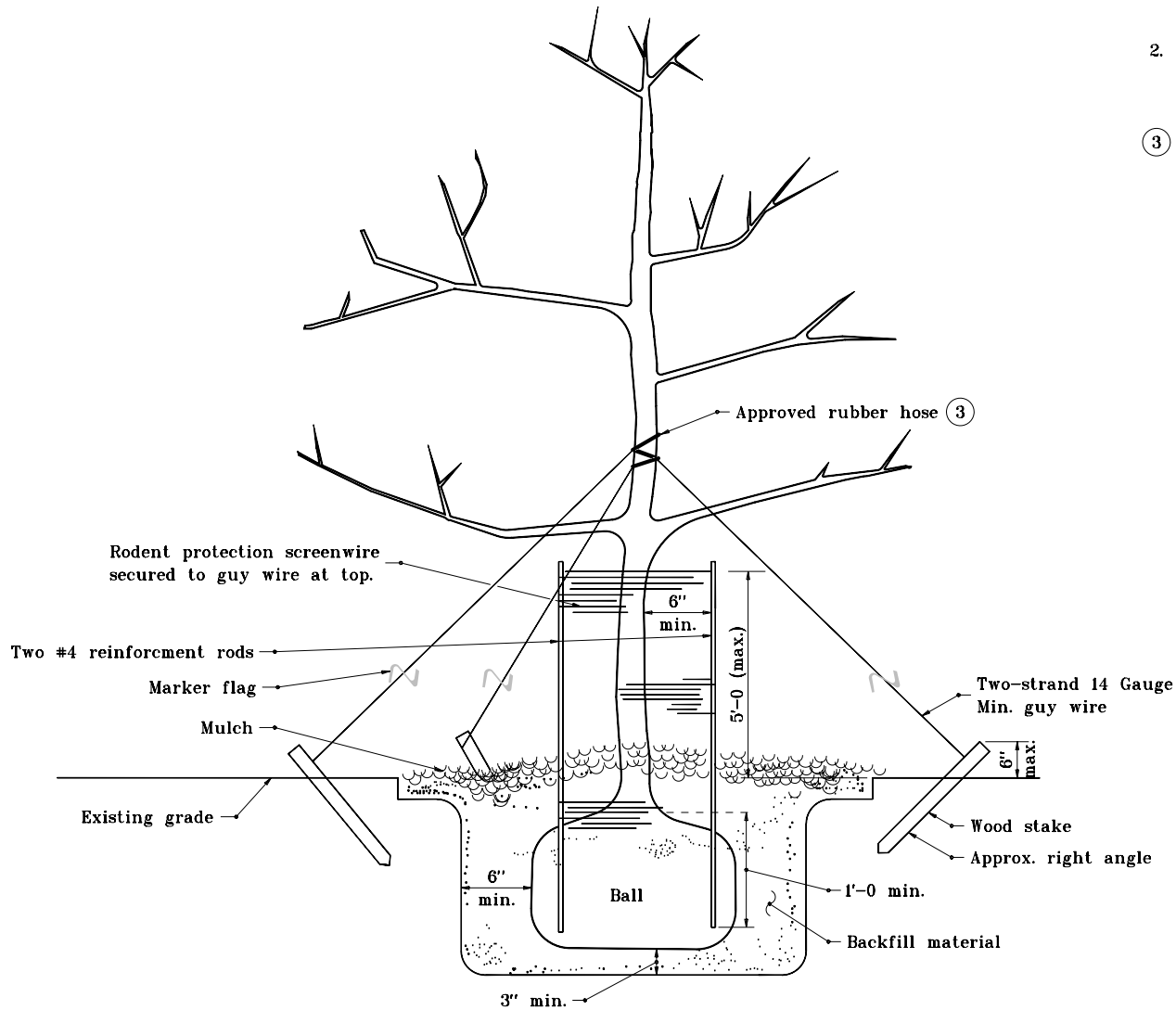


Detail applies to trees less than 1 1/4" caliper.

INDIANA DEPARTMENT OF TRANSPORTATION	
PLANTING BALLED AND BURLAPPED TREE	
APRIL 1995	
STANDARD DRAWING NO. E 622-LSPL-01	
DETAILS PLACED IN THIS FORMAT 11-15-99	
	/s/ Anthony L. Uremovich 11-15-99 DESIGN STANDARDS ENGINEER DATE
	/s/ Firooz Zandi 11-15-99 CHIEF HIGHWAY ENGINEER DATE
	ORIGINALLY APPROVED 4-03-95

GENERAL NOTES

1. This detail applies to Pine Trees (48" and over) with exception that screen wire protection shall not be required.
2. Plastic coil-type protective wrapping is an acceptable alternative to screen wire and reinforcement rod method of tree protection.
- ③ See Standard Drawing E 622-LSPL-04 for Rubber Hose Detail.

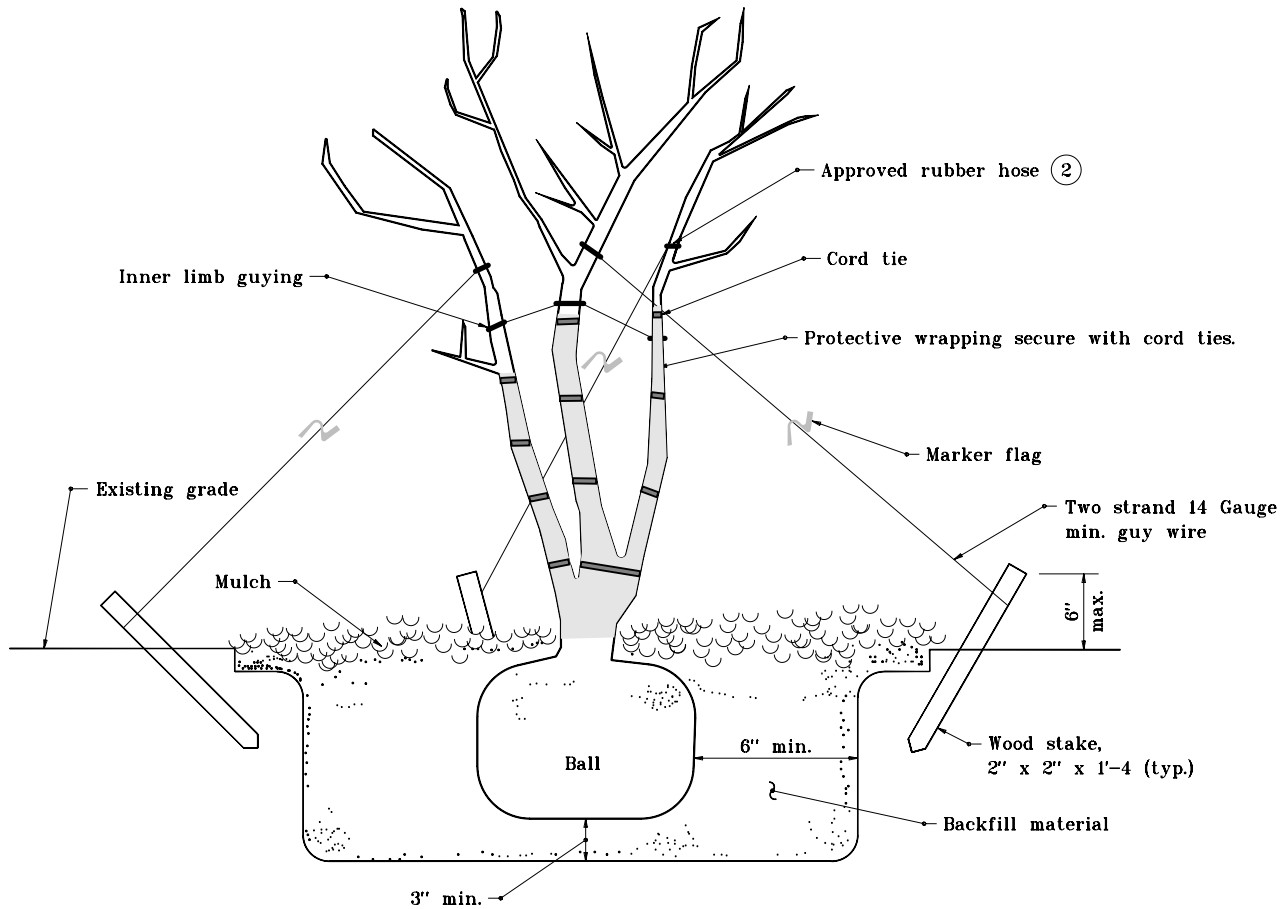


Detail applies to trees
1 1/4" caliper and greater

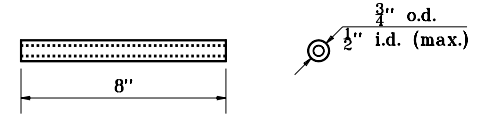
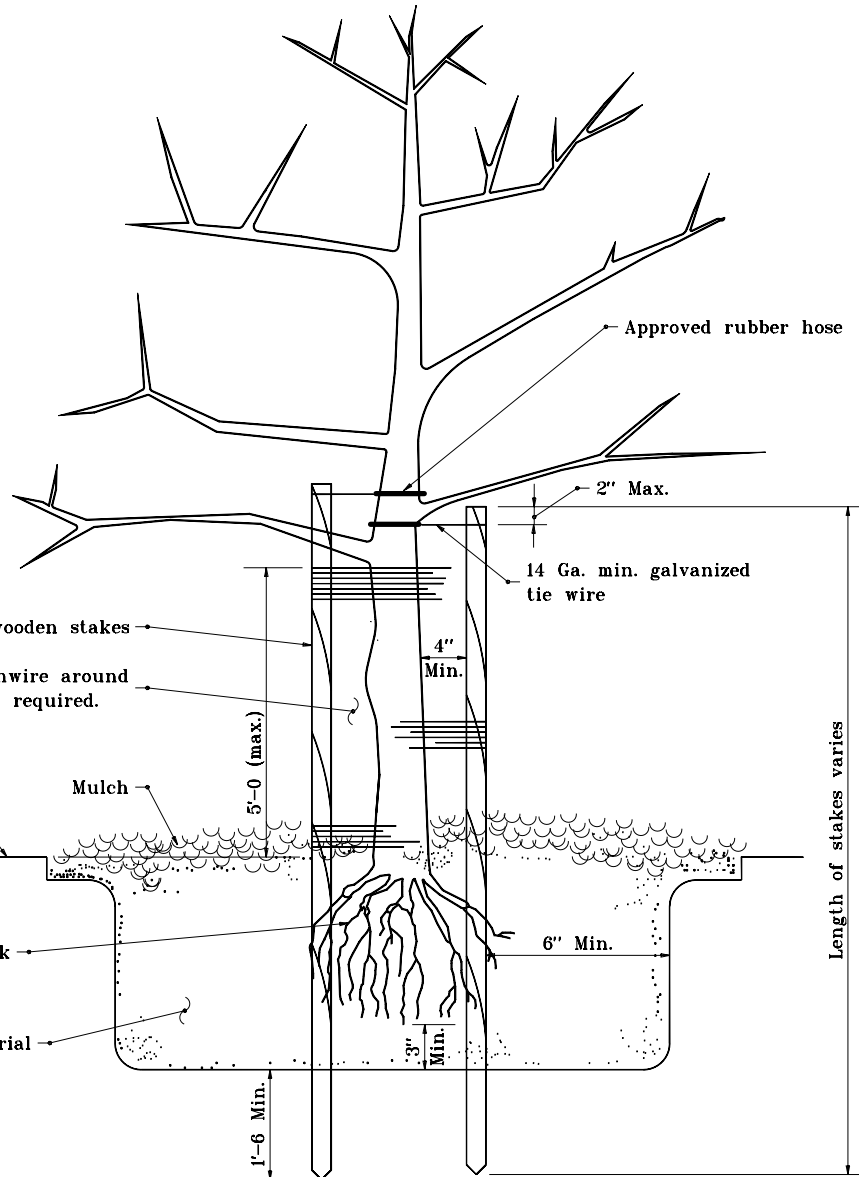
INDIANA DEPARTMENT OF TRANSPORTATION	
PLANTING BALLED AND BURLAPPED TREE	
APRIL 1995	
STANDARD DRAWING NO. E 622-LSPL-02	
	DETAILS PLACED IN THIS FORMAT 11-15-99
	/s/ Anthony L. Uremovich 11-15-99 DESIGN STANDARDS ENGINEER DATE
	/s/ Firooz Zandi 11-15-99 CHIEF HIGHWAY ENGINEER DATE
DESIGN STANDARDS ENGINEER	ORIGINALLY APPROVED 4-01-95

GENERAL NOTES

1. This detail applies to trees over 72".
- ② See Standard Drawing E 622-LSPL-04 for Rubber Hose Detail.



INDIANA DEPARTMENT OF TRANSPORTATION	
PLANTING MULTI-STEM TREE	
JANUARY 2000	
STANDARD DRAWING NO. E 622-LSPL-03	
	/s/ Anthony L. Uremovich 4-03-95 DESIGN STANDARDS ENGINEER DATE
DESIGN STANDARDS ENGINEER	/s/ Donald W. Lucas 4-03-95 CHIEF HIGHWAY ENGINEER DATE



RUBBER HOSE DETAIL

Two 2' x 2' wooden stakes
 Wrap rodent protection screenwire around stakes, reinforcement rod not required.

Existing grade

Mulch

Root stock

Backfill material

Approved rubber hose

2" Max.

14 Ga. min. galvanized tie wire

4" Min.

5'-0 (max.)

6" Min.

3" Min.

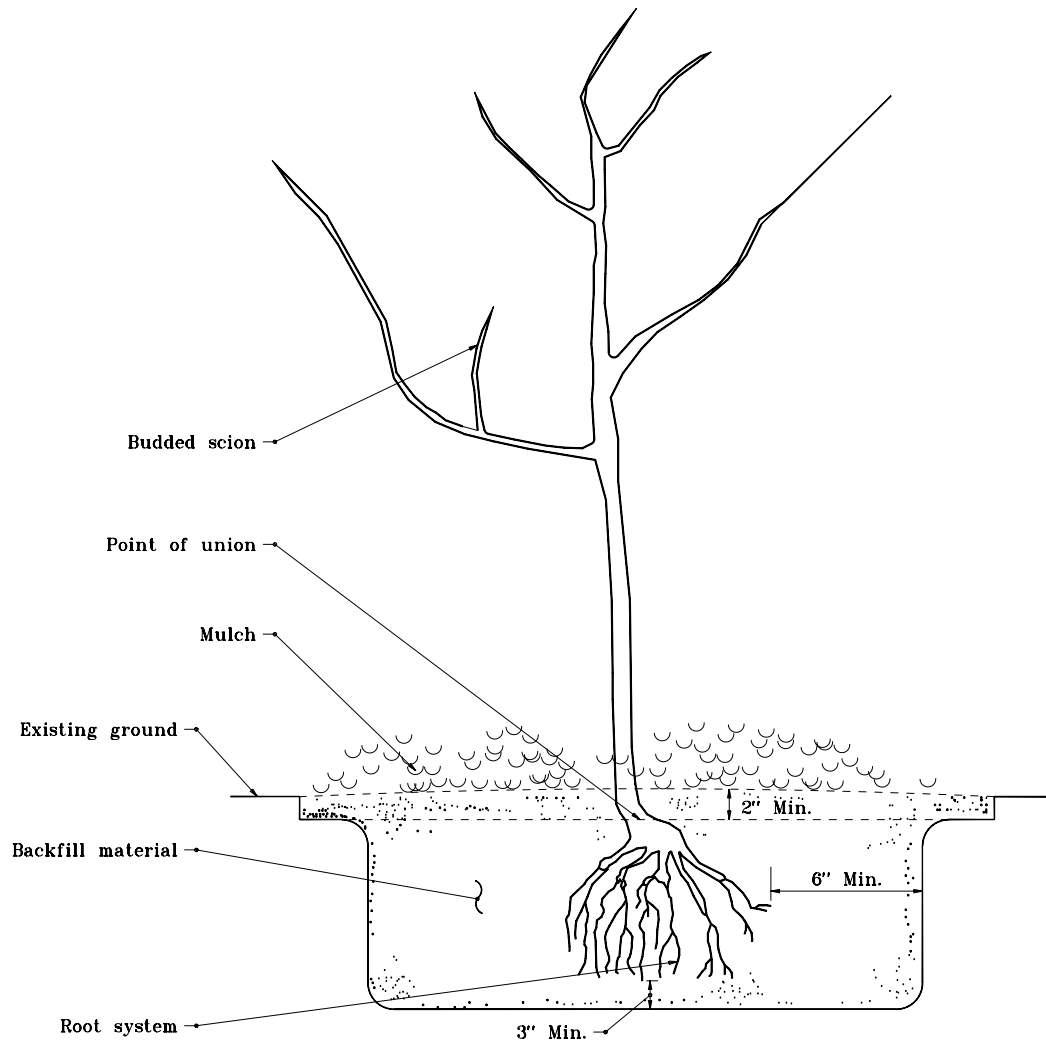
1'-6 Min.

Length of stakes varies

INDIANA DEPARTMENT OF TRANSPORTATION	
PLANTING BARE ROOT TREE	
APRIL 1995	
STANDARD DRAWING NO. E 622-LSPL-04	
DETAILS PLACED IN THIS FORMAT 11-15-99	
	/s/ Anthony L. Uremovich 11-15-99 DESIGN STANDARDS ENGINEER DATE
	/s/ Firooz Zandi 11-15-99 CHIEF HIGHWAY ENGINEER DATE
	ORIGINALLY APPROVED 4-01-95

GENERAL NOTES

1. This detail to be followed in the planting of grafted bare root stock.

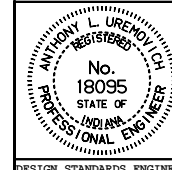


INDIANA DEPARTMENT OF TRANSPORTATION

PLANTING GRAFTED TREE

APRIL 1995

STANDARD DRAWING NO. **E 622-LSPL-05**



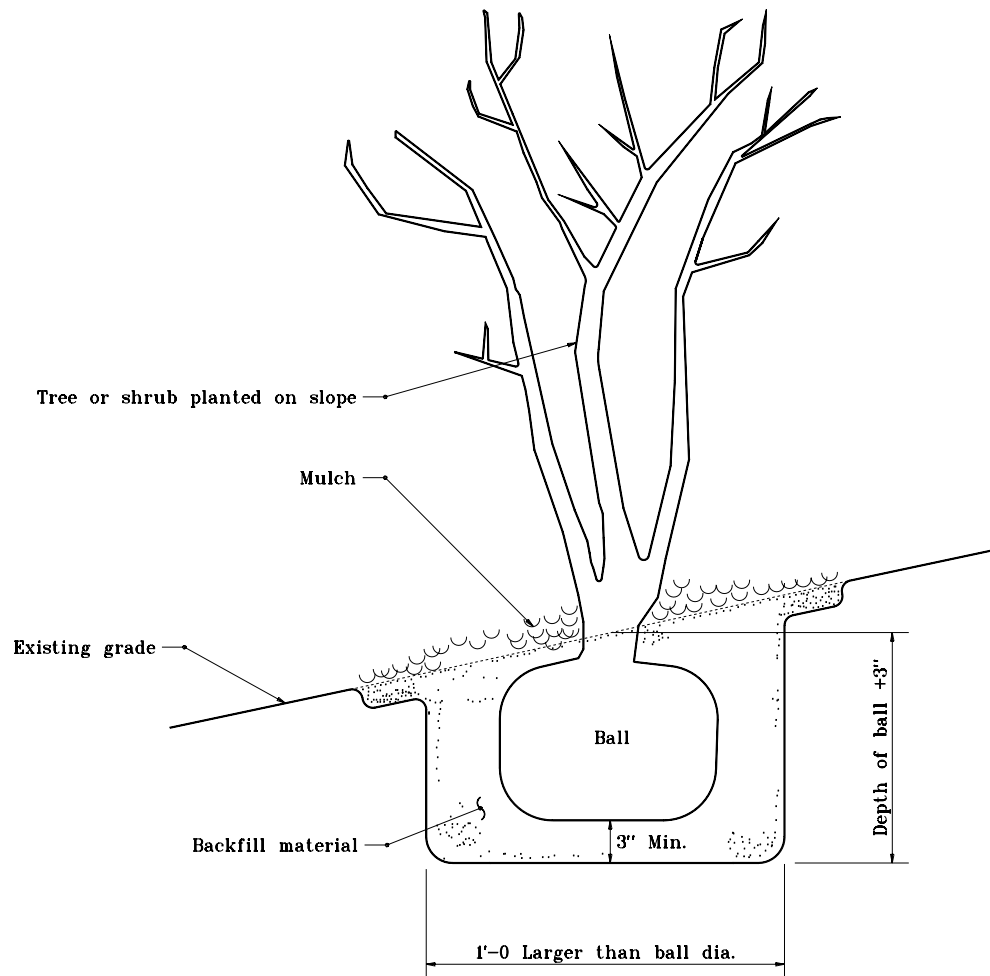
DETAILS PLACED IN THIS FORMAT 11-15-99

/s/ Anthony L. Uremovich 11-15-99
DESIGN STANDARDS ENGINEER DATE

/s/ Firooz Zandi 11-15-99
CHIEF HIGHWAY ENGINEER DATE

DESIGN STANDARDS ENGINEER

ORIGINALLY APPROVED 4-01-95

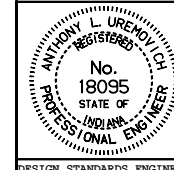


INDIANA DEPARTMENT OF TRANSPORTATION

PLANTING ON SLOPE

APRIL 1995

STANDARD DRAWING NO. **E 622-LSPL-06**



DETAILS PLACED IN THIS FORMAT 11-15-99

/s/ Anthony L. Uremovich 11-15-99
DESIGN STANDARDS ENGINEER DATE

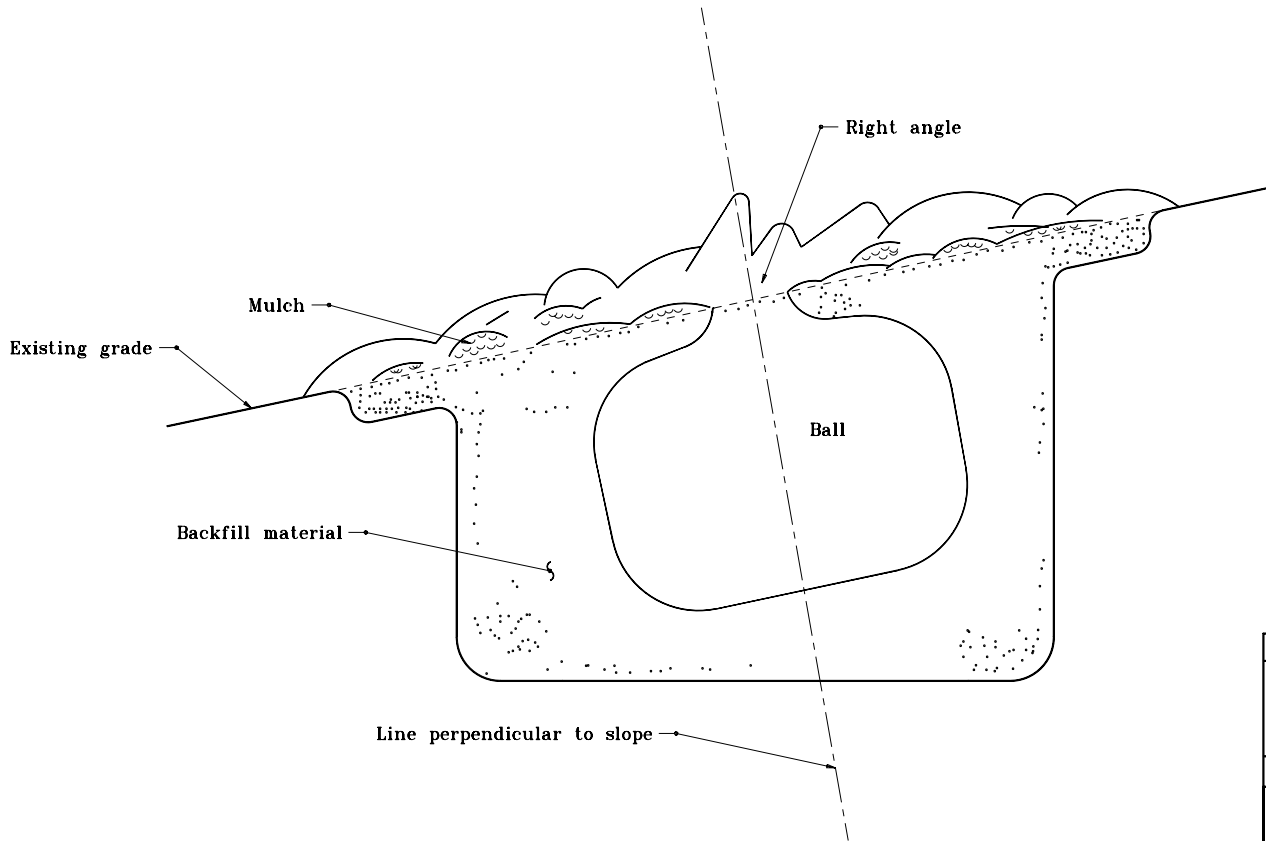
/s/ Firooz Zandi 11-15-99
CHIEF HIGHWAY ENGINEER DATE

DESIGN STANDARDS ENGINEER

ORIGINALLY APPROVED 4-03-95

GENERAL NOTES

1. Prostrate shrub planted at right angle to slope.

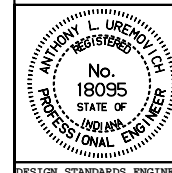


INDIANA DEPARTMENT OF TRANSPORTATION

PLANTING ON SLOPE

APRIL 1995

STANDARD DRAWING NO. **E 622-LSPL-07**



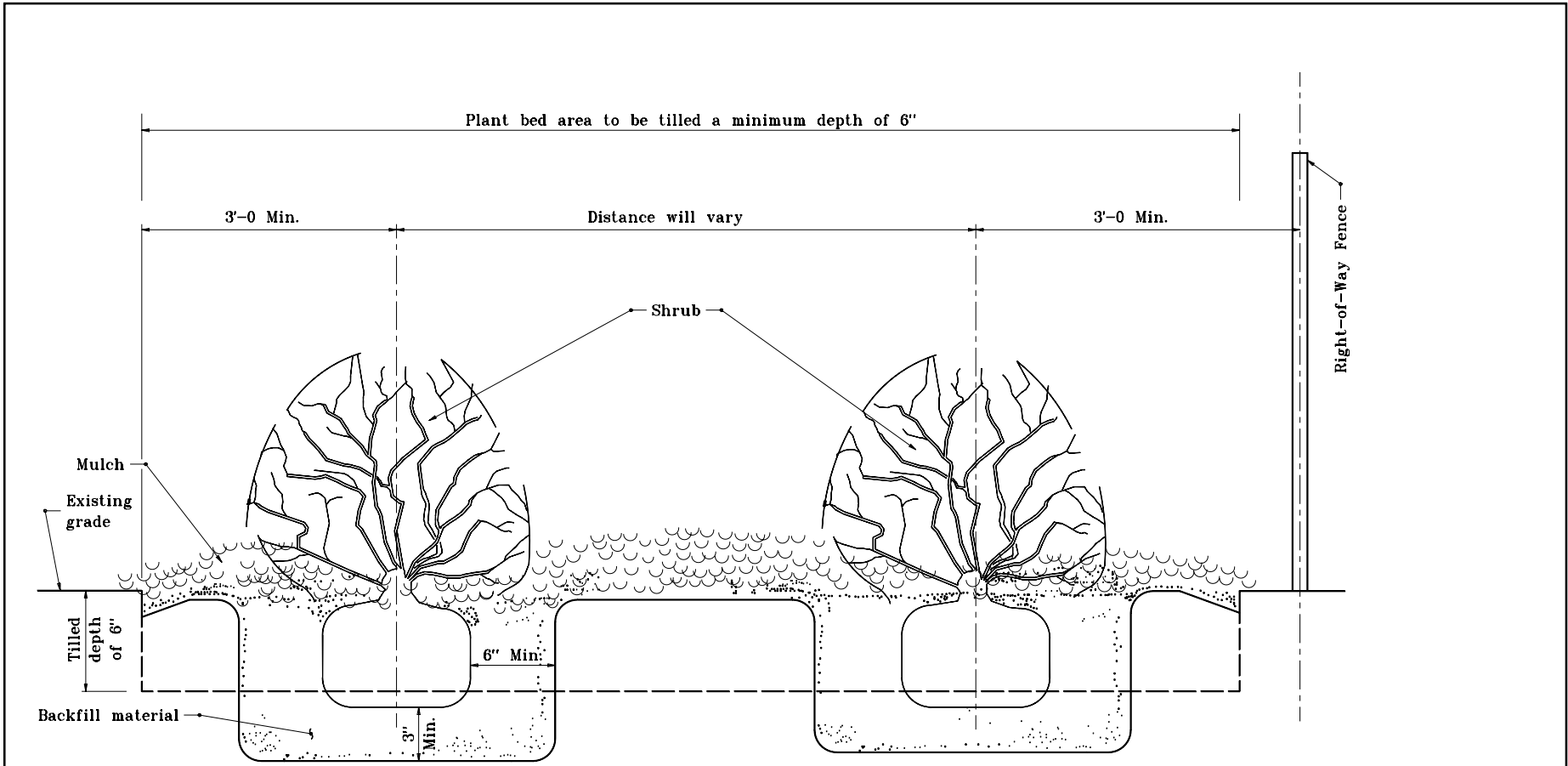
DETAILS PLACED IN THIS FORMAT 11-15-99

/s/ Anthony L. Uremovich 11-15-99
DESIGN STANDARDS ENGINEER DATE

/s/ Firooz Zandi 11-15-99
CHIEF HIGHWAY ENGINEER DATE

DESIGN STANDARDS ENGINEER

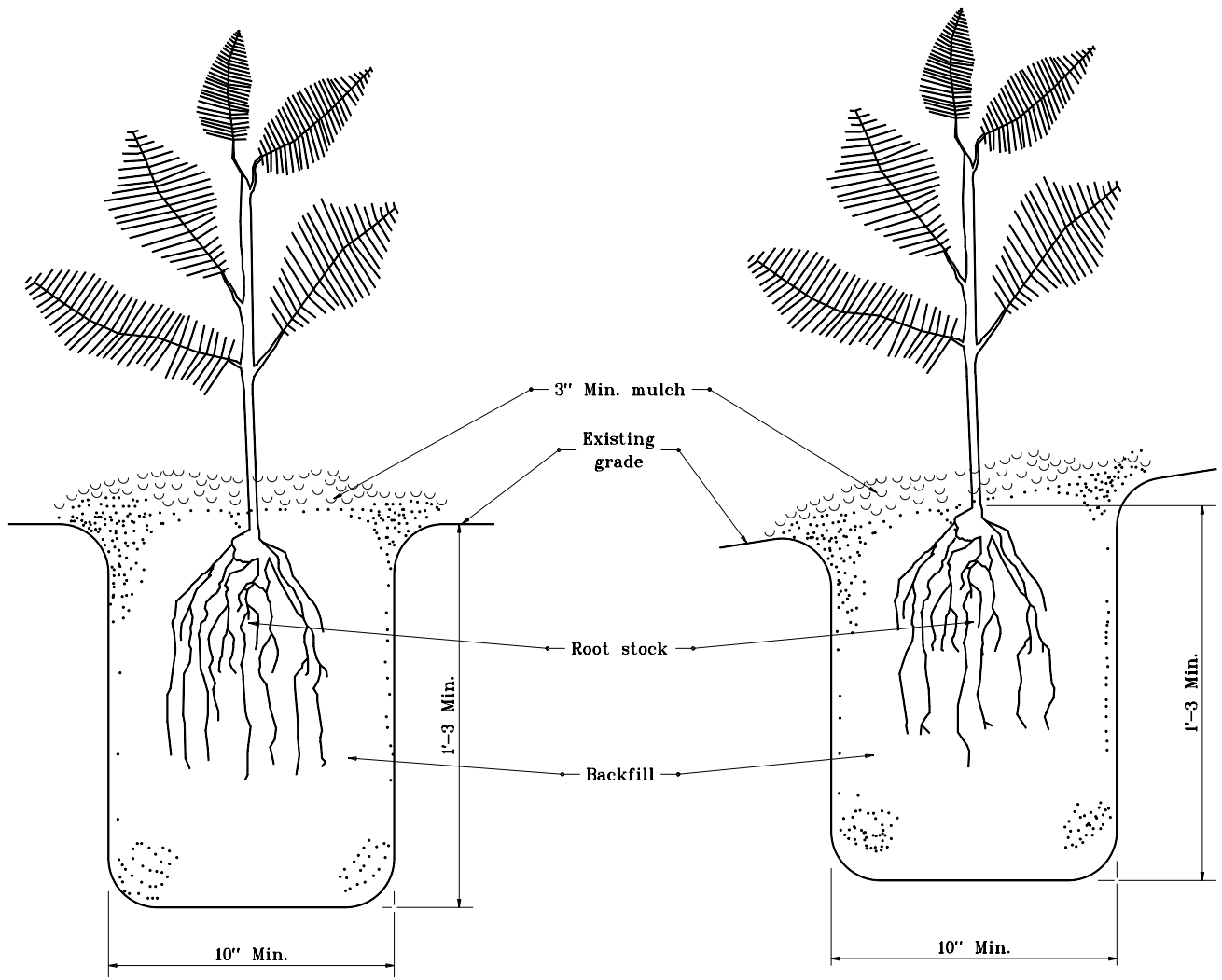
ORIGINALLY APPROVED 4-01-95



GENERAL NOTES

1. Take specified mulch depth to edge of bed over 3'-0 distance from center of outer plant.
2. See Standard Drawing E 622-LSPL-10 for typical plan of shrub bed.

INDIANA DEPARTMENT OF TRANSPORTATION	
TYPICAL SECTION OF SHRUB BED	
APRIL 1995	
STANDARD DRAWING NO. E 622-LSPL-08	
	DETAILS PLACED IN THIS FORMAT 11-15-99
	/s/ Anthony L. Uremovich 11-15-99 DESIGN STANDARDS ENGINEER DATE
	/s/ Firooz Zandi 11-15-99 CHIEF HIGHWAY ENGINEER DATE
DESIGN STANDARDS ENGINEER	ORIGINALLY APPROVED 4-01-95



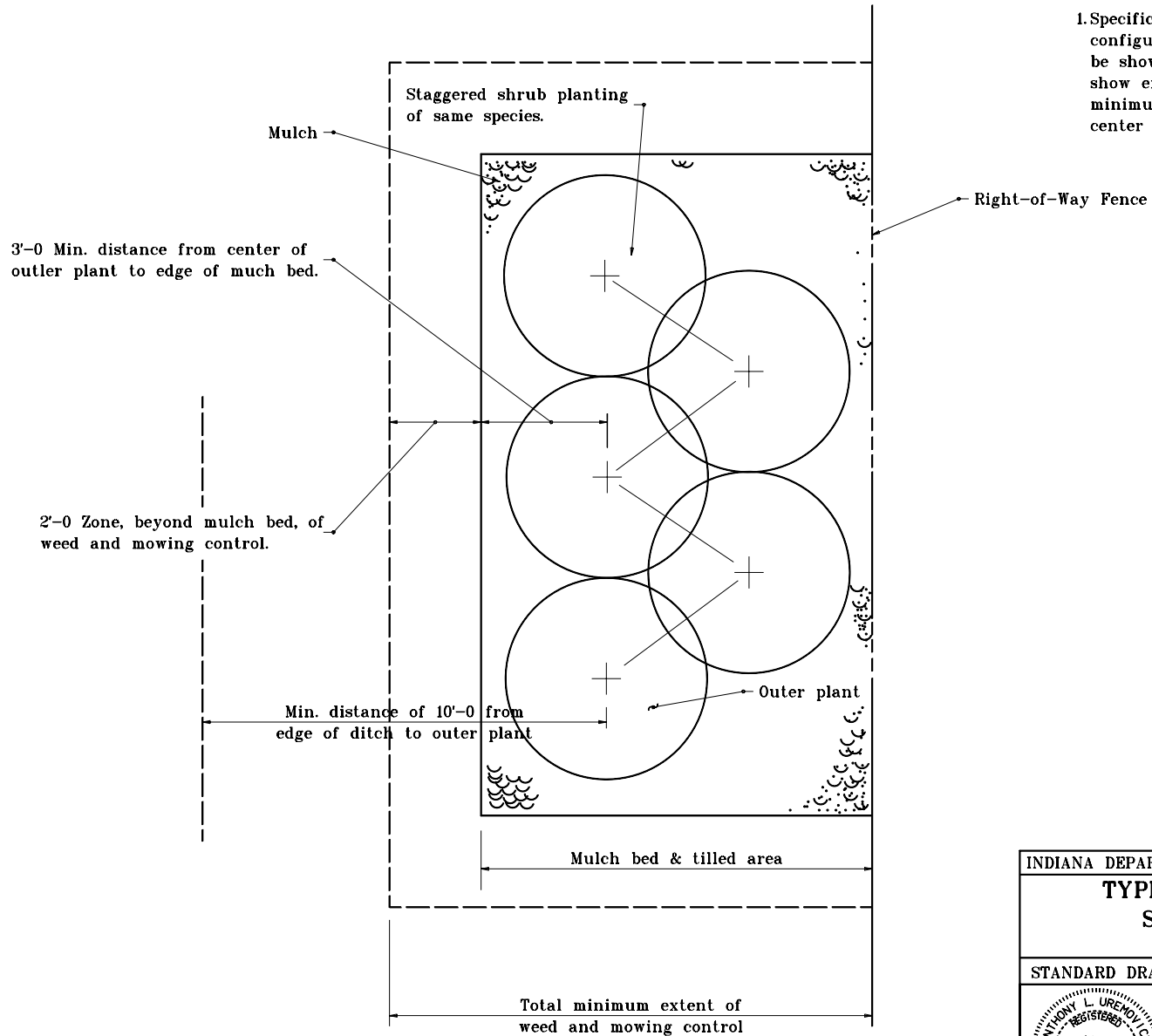
Seedling Variety on Level Land

Seedling Variety on Slope

INDIANA DEPARTMENT OF TRANSPORTATION	
PLANTING SEEDLING VARIETIES	
APRIL 1995	
STANDARD DRAWING NO. E 622-LSPL-09	
	DETAILS PLACED IN THIS FORMAT 11-15-99 /s/ Anthony L. Uremovich 11-15-99 DESIGN STANDARDS ENGINEER DATE
	/s/ Firooz Zandi 11-15-99 CHIEF HIGHWAY ENGINEER DATE
	ORIGINALLY APPROVED 4-01-95

GENERAL NOTES

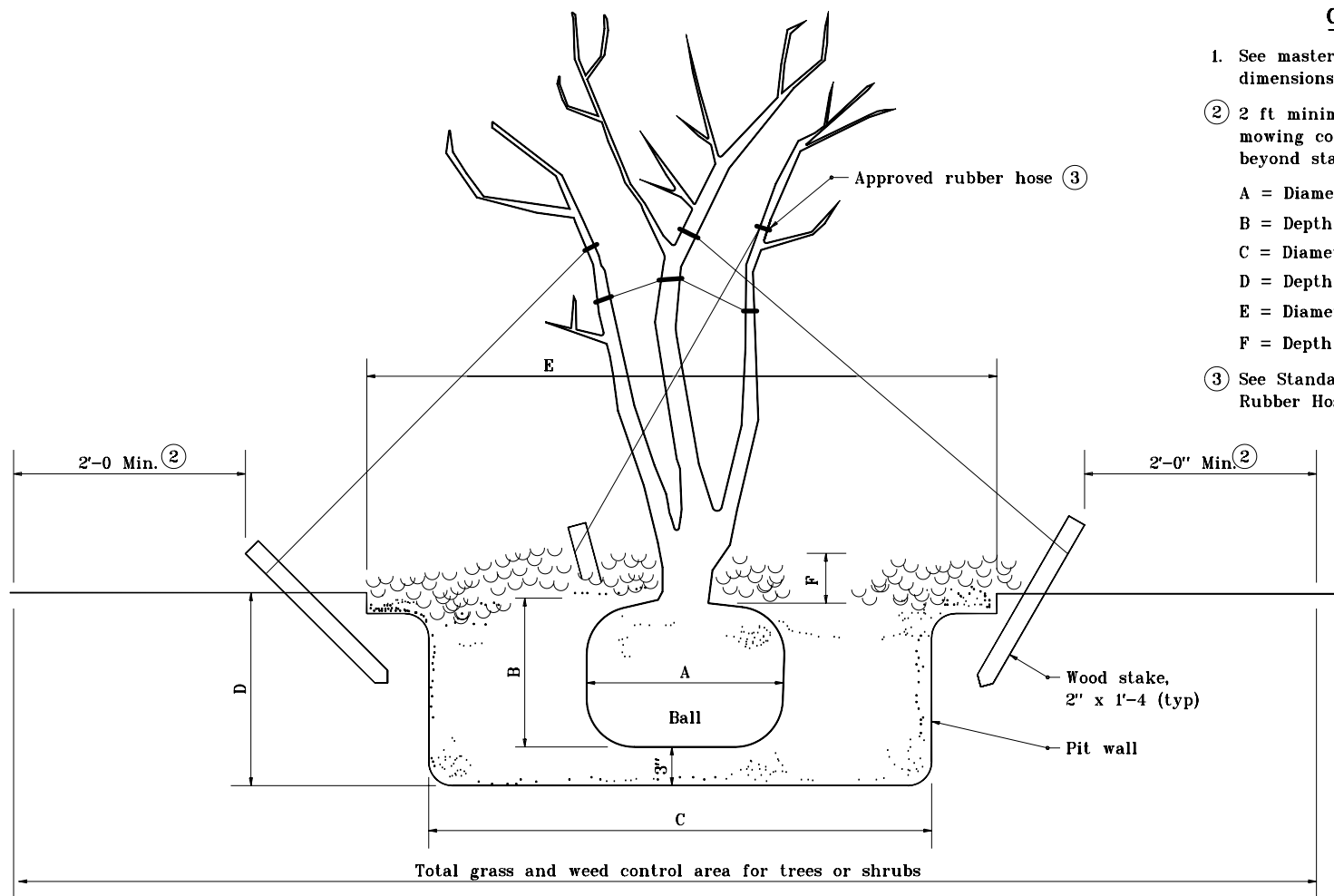
1. Specific variations on shrub bed configurations and layout will be shown on plans. Plans will show exceptions to 10 ft minimum distance from ditch to center of outer plants.



INDIANA DEPARTMENT OF TRANSPORTATION	
TYPICAL PLAN OF SHRUB BED	
APRIL 1995	
STANDARD DRAWING NO. E 622-LSPL-10	
	DETAILS PLACED IN THIS FORMAT 11-15-99
	/s/ Anthony L. Uremovich 11-15-99 DESIGN STANDARDS ENGINEER DATE
	/s/ Firooz Zandi 11-15-99 CHIEF HIGHWAY ENGINEER DATE
DESIGN STANDARDS ENGINEER	ORIGINALLY APPROVED 4-01-95

GENERAL NOTES

1. See master plant list for specific dimensions applied to individual plants.
- ② 2 ft minimum distance for weed and mowing control applies to zone beyond stakes or mulch bed.
- A = Diameter of ball
- B = Depth of ball
- C = Diameter of pit
- D = Depth of pit
- E = Diameter of mulch bed
- F = Depth of mulch bed
- ③ See Standard Drawing E 622-LSPL-04 for Rubber Hose Detail.



INDIANA DEPARTMENT OF TRANSPORTATION	
COMMONLY USED DIMENSIONS	
APRIL 1995	
STANDARD DRAWING NO. E 622-LSPL-11	
	DETAILS PLACED IN THIS FORMAT 11-15-99
	/s/ Anthony L. Uremovich 11-15-99 DESIGN STANDARDS ENGINEER DATE
	/s/ Firooz Zandi 11-15-99 CHIEF HIGHWAY ENGINEER DATE
	DESIGN STANDARDS ENGINEER ORIGINALLY APPROVED 4-03-95